



USER MANUAL

Elo Touch Solutions Interactive Digital Signage (IDS) ECMG3 For IDS 3202L / 4202L / 4602L / 5502L



Copyright © 2018 Elo Touch Solutions, Inc. All Rights Reserved.

No part of this publication may be reproduced, transmitted, transcribed, stored in a retrieval system, or translated into any language or computer language, in any form or by any means, including, but not limited to, electronic, magnetic, optical, chemical, manual, or otherwise without prior written permission of Elo Touch Solutions, Inc.

Disclaimer

The information in this document is subject to change without notice. Elo Touch Solutions, Inc. and its Affiliates (collectively “Elo”) makes no representations or warranties with respect to the contents herein, and specifically disclaims any implied warranties of merchantability or fitness for a particular purpose. Elo reserves the right to revise this publication and to make changes from time to time in the content hereof without obligation of Elo to notify any person of such revisions or changes.

Trademark Acknowledgments

Elo, Elo (logo), Elo Touch, and Elo Touch Solutions are trademarks of Elo and its Affiliates. Windows is a trademark of Microsoft Corporation.

Table of Contents

Section 1: Introduction.....	4
Section 2: Unpacking	5
Section 3: Computer Module Installation.....	6
Section 4: Technical Support.....	25
Section 5: Safety & Maintenance.....	27
Section 7: Regulatory Information.....	28
Section 8: Warranty Information	21

Section 1: Introduction

Product Description

Interactive Digital Signage Elo Computer Module Generation 3 (ECMG3) is designed to slide into the bay on the back of the IDS 02-Series touch displays, without any effect on the monitor's form factor or requiring any extra cabling. By combining the two, you can transform your Interactive Digital Signage Touch Display into an all-In-one touchcomputer.

Precautions

Follow all warnings, precautions and maintenance as recommended in this user's manual to maximize the life of your unit and prevent risks to user safety.

This manual contains information that is important for the proper setup and maintenance of the Computer Module. Before setting up and powering on your new Computer Module, read through this manual, especially the Computer Module Installation chapter.

Section 2: Unpacking

Unpacking the ECMG3

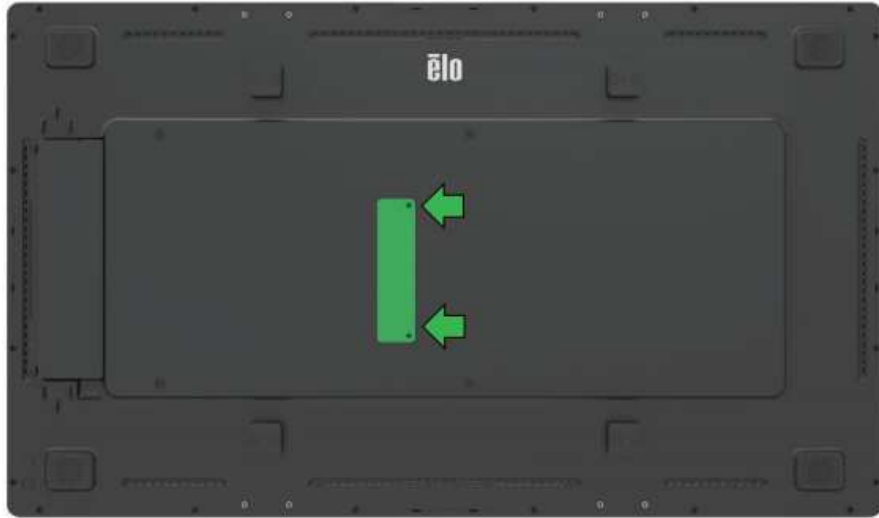
Check that the following items are present and in good condition:

- Computer Module
- Quick Install Guide
- PC Box Cable Cover

Section 3: Computer Module Installation

Installation

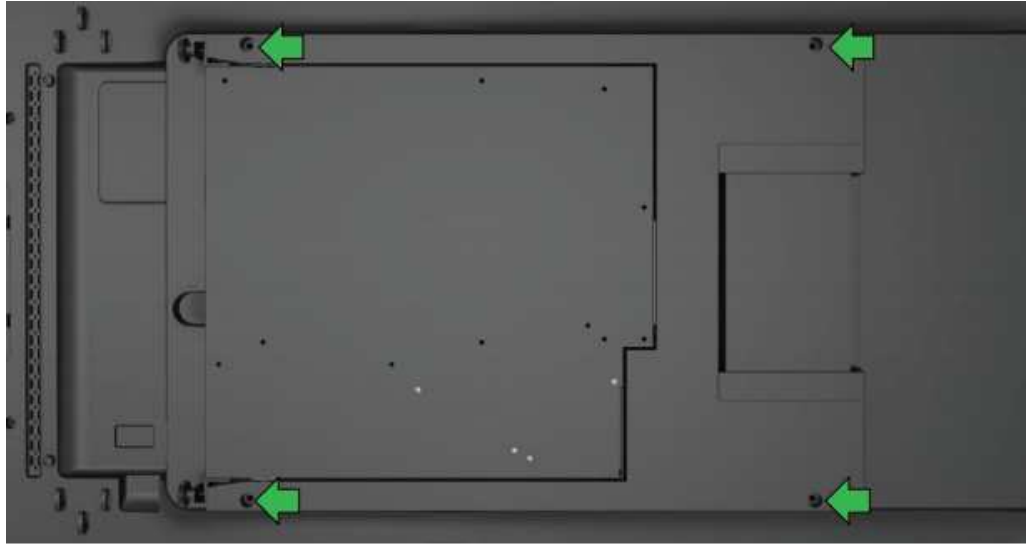
1. Use a Phillips head screwdriver to remove the ECM docking cover plate on the back of the touchmonitor.



2. Snap the Computer Module onto the mating connector on the back of the touchmonitor.



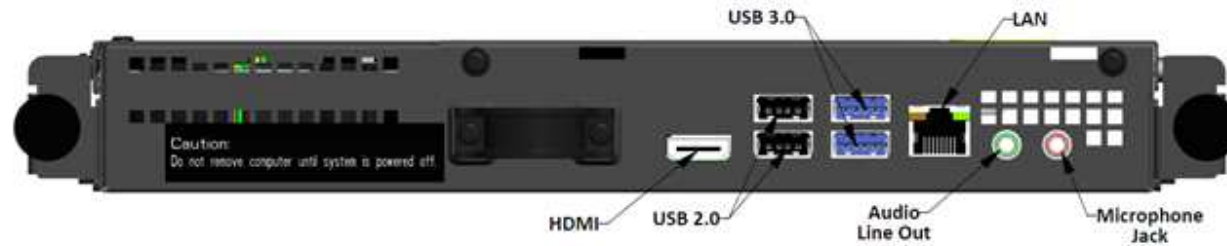
3. Tighten the four screws to secure the Computer Module onto the back of the touchmonitor. Mount the IDS to any VESA compliant wallmount using the extension spacers and screws (included).



Note: Once the ECM is installed, the ECM can be easily removed for maintenance reasons by loosening the thumbscrews and sliding it out.



Connector Panel & Interfaces



Touchmonitor & Computer Module Connections

1. Once the Computer Module has been installed, connect the AC power cable between the touchmonitor's POWER IN connector and the AC power source.
 - a. NOTE: Computer Module can be installed when the AC power cable is connected (Hot pluggable). Do not remove the Computer Module unless it is completely shut off.
2. Make any desired connections to the Computer Module connector panel.
3. Press the touchmonitor's power button to turn on the Computer Module.

Operating System Setup – Windows® 7

The initial setup of the operating system takes approximately five minutes. Additional time might be needed for different hardware and operating system configurations. You will need to plug in an external mouse and/or keyboard into the Computer Module connector panel to execute these steps.

To set up the Windows 7 OS for the Computer Module, turn on the touchcomputer and follow the instructions on the screen.

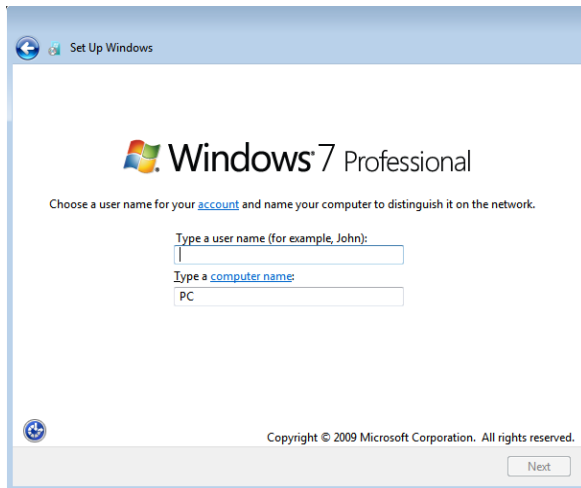
Selecting the Region and Language

English is the default language in Windows menus and dialog boxes. You can change this language according to your preference.



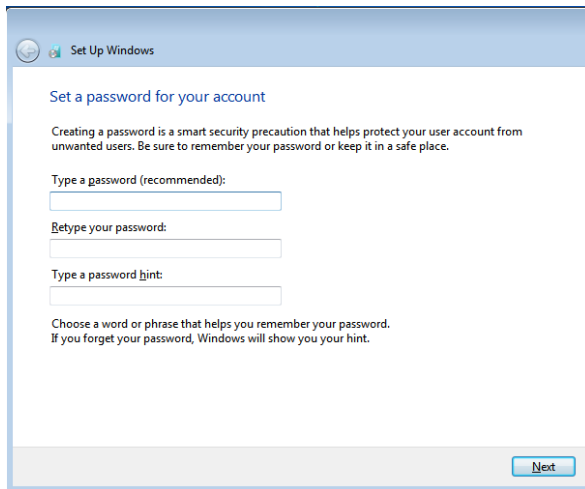
Choosing the computer name

You will be prompted to enter the computer's name.



Create a password for the system

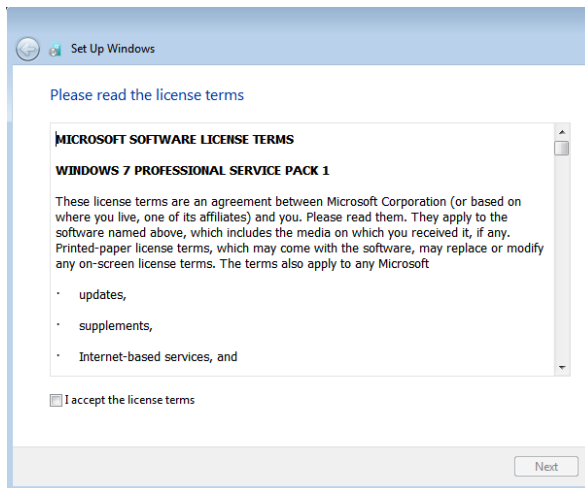
You will be prompted to create a password for the system. This is optional. If no password is desired, press the “Next” button.



The screenshot shows the 'Set Up Windows' window with the title 'Set a password for your account'. Below the title is a paragraph explaining that creating a password is a security precaution. There are three input fields: 'Type a password (recommended):', 'Retype your password:', and 'Type a password hint:'. Below these fields is another paragraph advising to choose a word or phrase that helps remember the password. A 'Next' button is located at the bottom right of the window.

Agreeing to Terms and Conditions

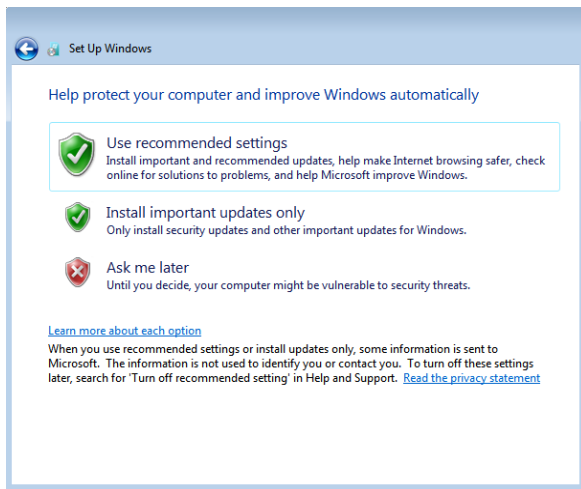
You will be prompted to agree to the Windows license terms. Click “I Accept” to continue



The screenshot shows the 'Set Up Windows' window with the title 'Please read the license terms'. A scrollable text area contains the following text: 'MICROSOFT SOFTWARE LICENSE TERMS', 'WINDOWS 7 PROFESSIONAL SERVICE PACK 1', and a paragraph of terms. Below the text area is a list of items: 'updates,', 'supplements,', and 'Internet-based services, and'. At the bottom left of the text area is a checkbox labeled 'I accept the license terms'. A 'Next' button is located at the bottom right of the window.

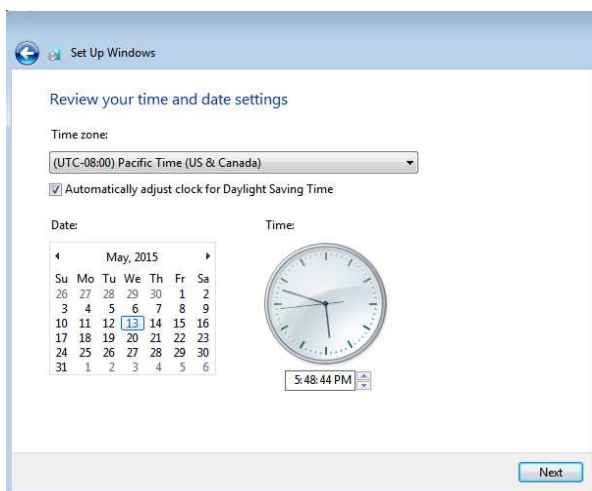
Choosing the Windows Update settings

You will be prompted to select the Windows Update settings.



Selecting the Time Zone

When the following window appears, you can set the Computer Module's time zone, date and time. Click "Next" to finish. Windows Setup completes the OS installation.



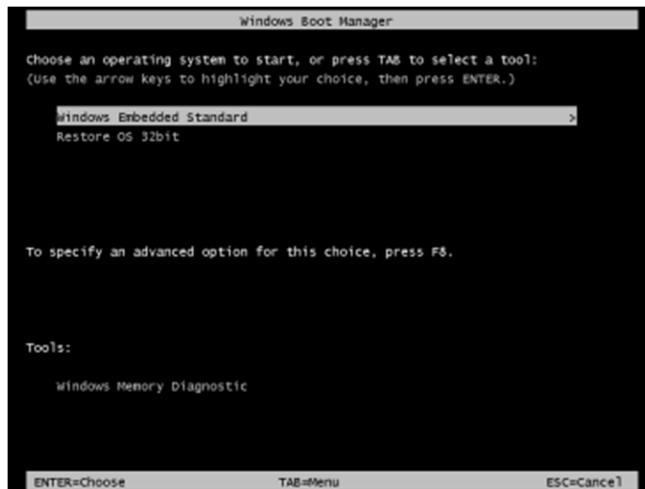
Injecting a New Language in Windows 7

Windows can only run one language at any given time. The Elo Touch Solutions language injection feature can be used to modify your language preference. English is set as the default language, but you can change this language according to your preferences. To use the language injection feature:

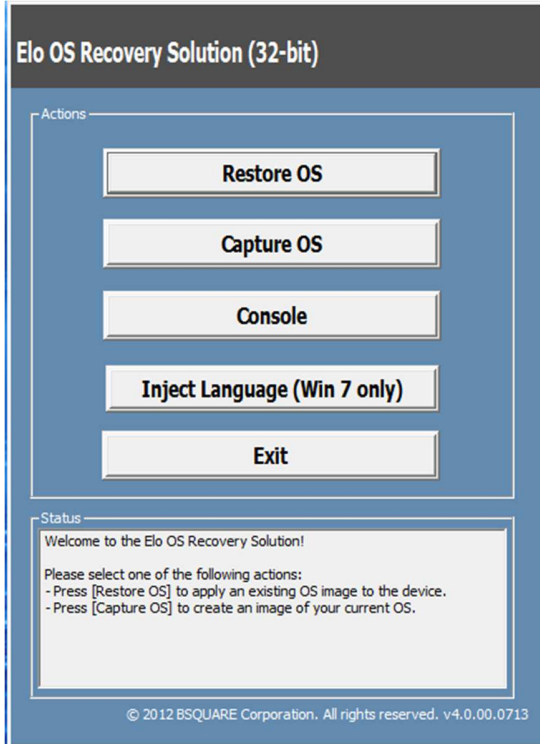
1. Power off your system completely.
2. Power on your system.
3. After the Elo splash screen (shown below), press “↑” or “↓” repeatedly to pause on Windows Boot Manager.



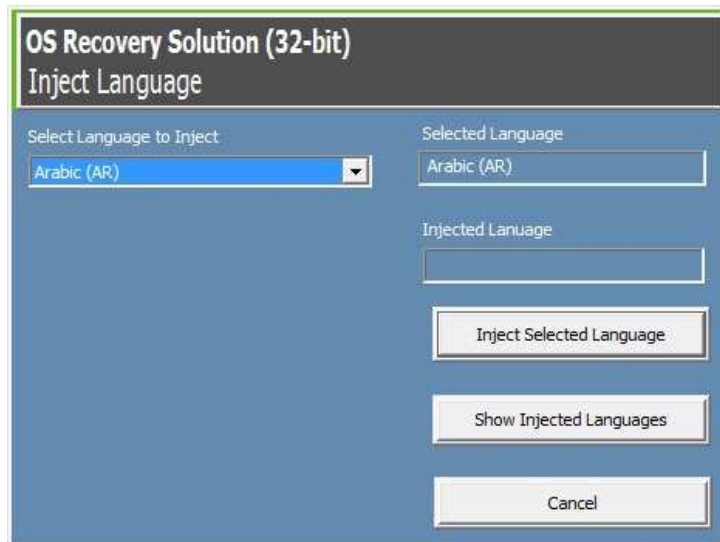
4. Select either “Restore OS 32bit” or “Restore OS 64bit” depending on your OS environment.



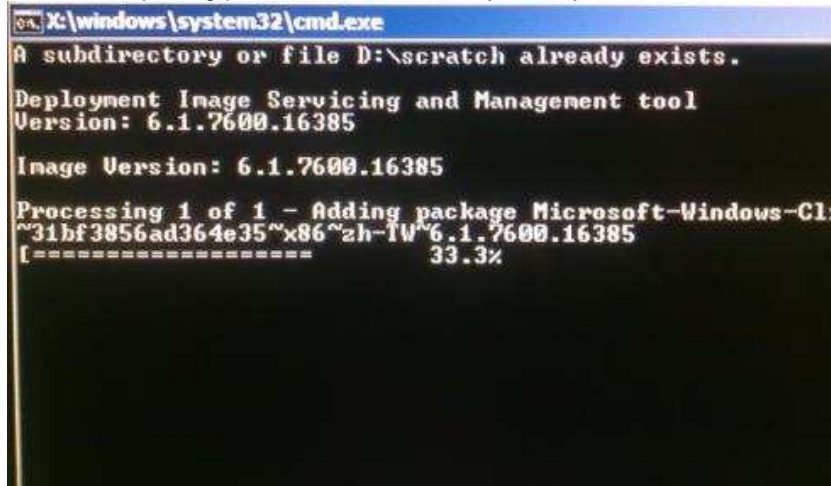
5. The following User Interface (UI) will appear:



6. Select "Inject Language" and the following UI will appear.



7. Click the drop-down list and select the preferred language.
8. Click “Inject Selected Language”
9. While the injecting process, DO NOT use your keyboard or mouse as this may cause an error in the language injection process.



10. After successful installation of the language package, press any key to exit the window.
11. You should see the newly injected language in both “Selected Language” and “Injected Language”.
12. Click “Cancel” → “Exit”. The system will reboot and the new language UI should be presented when the system enters the Desktop.

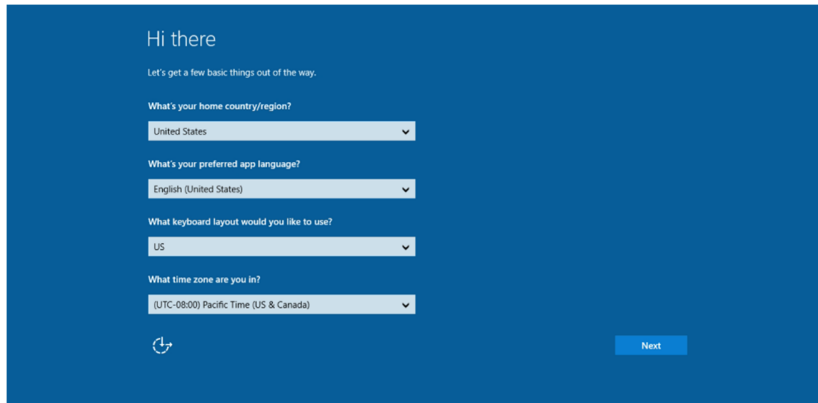
Operating System Setup – Windows 10

Initial setup of the operating system takes approximately five minutes. Additional time may be needed for different Computer Module hardware and operating system configurations. You will need to plug in an external keyboard and/or mouse into the Computer Module connector panel to execute these steps.

To set up the Windows 10 OS for the Computer Module, turn on the touchcomputer and follow the instructions on the screen.

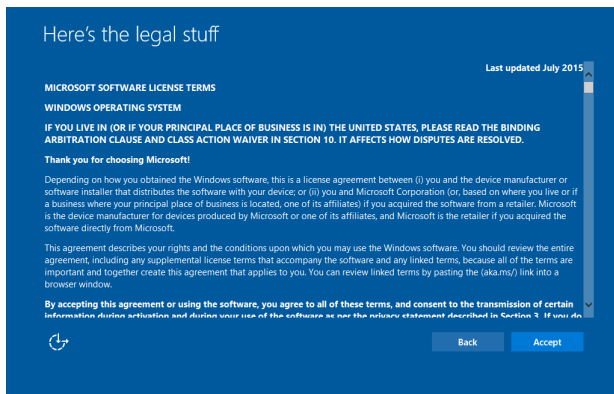
Selecting the Language

Windows will prompt you to select your language of preference. See reference image below.



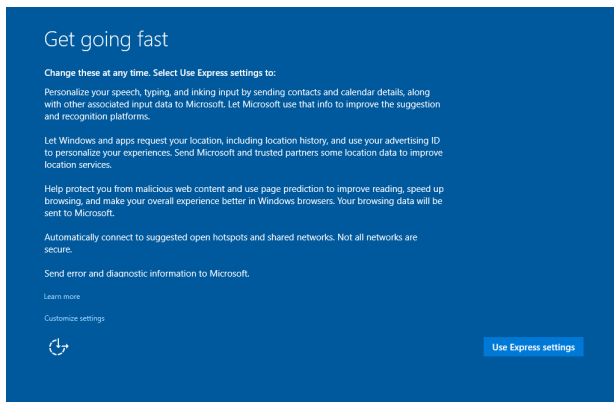
Agreeing to Terms and Conditions

You will be prompted to agree to the Windows license terms. Click "I Accept" to continue.



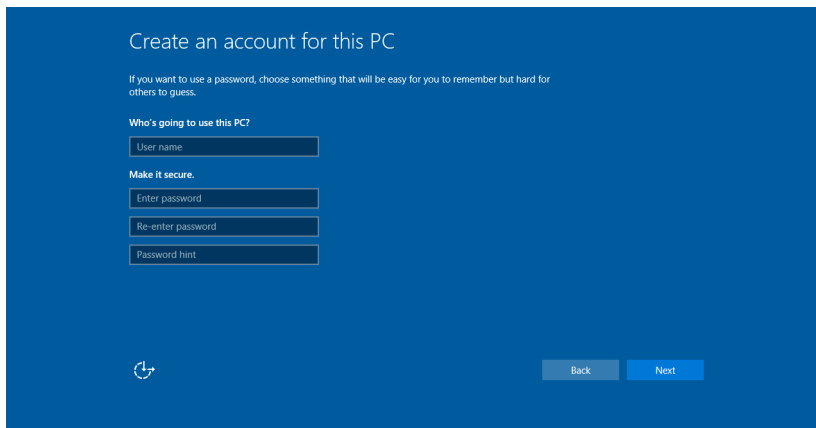
Choosing the Windows Settings

You will be prompted to select the Windows settings



Creating Your Account

You will be prompted to create a Username and Password. Once set up, click “Finish” to complete Setup. See reference image below.



Operating System Setup – No OS

No Operating System (No OS) units will require an operating system to be installed on them.

Load your operating system of choice onto the Computer Module.

Cancel any attempts by your operating system to load drivers for the new USB device (the Elo touchscreen) it finds.

Once you have installed an OS image onto your computer, allow the system to automatically install all the available drivers. You can download the latest Elo Touch Driver from the website mentioned above and proceed to install that driver onto the computer.

Installing Touchscreen Technology Software Drivers on Elo Computer Modules

Visit the Elo Touch Solutions website www.elotouch.com for:

- The latest versions of our touch drivers
- Additional touch driver information
- Detailed touch driver installation guides
- Touch drivers for other operating systems

Download and install the required touch driver from www.elotouch.com.

Setting Up the Operating System

Initial operating system setup takes approximately 5-10 minutes. Additional time may be needed depending on touchcomputer hardware configurations and devices connected to the touchcomputer.

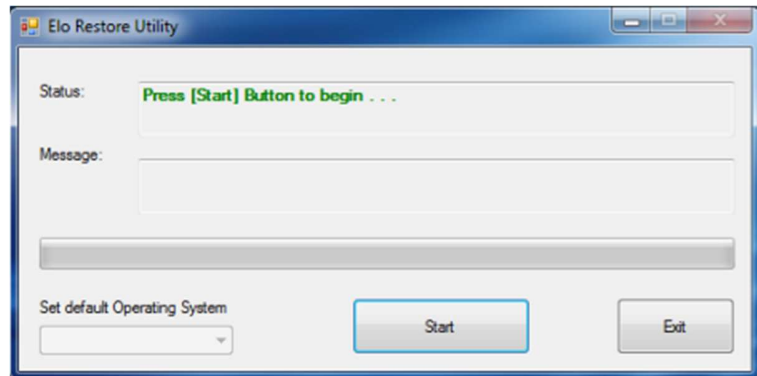
To set up the Microsoft® Windows® Operating System for the touch system, turn on the touchmonitor by pressing the power button, and then follow the on-screen instructions.

Creating the Recovery Flash Drive

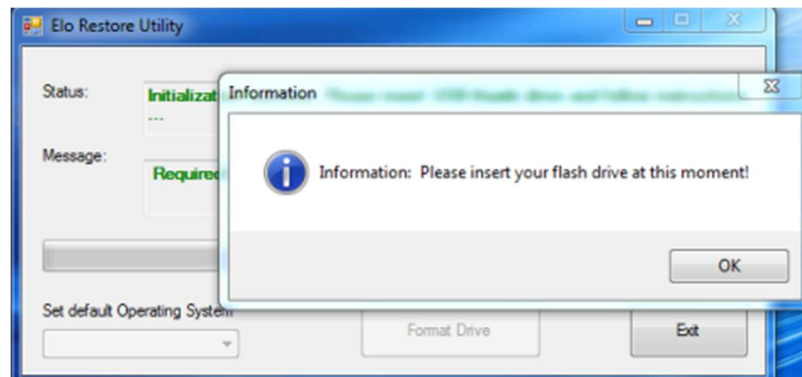
All Windows 7, Windows 8.1 and Windows 10 Computer Modules come with the built-in Elo Restore Utility on the Windows Desktop. The utility allows for creation of a recovery flash drive based on the purchased operating system. **Please create your recovery flash drive immediately.** In the event that the HDD/SSD recovery partition accidentally gets deleted or becomes inaccessible, you can use the recovery flash drive to recover your system.

The following procedures demonstrate how to create a recovery flash drive.

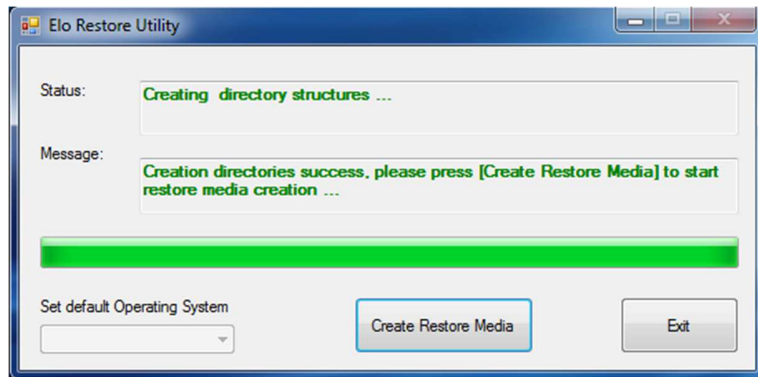
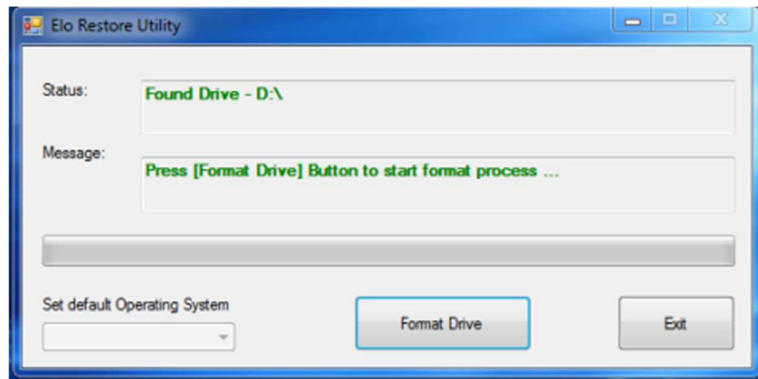
1. Right-click on the EloRestoreUtility icon on the Desktop and select “Run as administrator.”



2. Click “Start” button to begin the process.
3. Once completed, you will see a pop-up window that will prompt you to insert a blank flash drive to any of the available USB ports on your system. (For Windows 7, use a flash drive with at least 64GB of space available. For Windows 8.1, use a flash drive with at least 16 GB of space available)

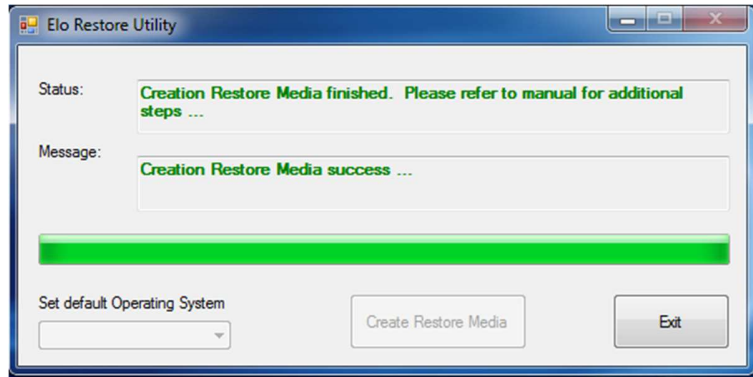


4. After the flash drive is plugged in, you will see the below window. Click “Format Drive” to continue the process. PLEASE NOTE THAT THIS WILL ERASE ALL DATA CONTAINED IN THE FLASH.

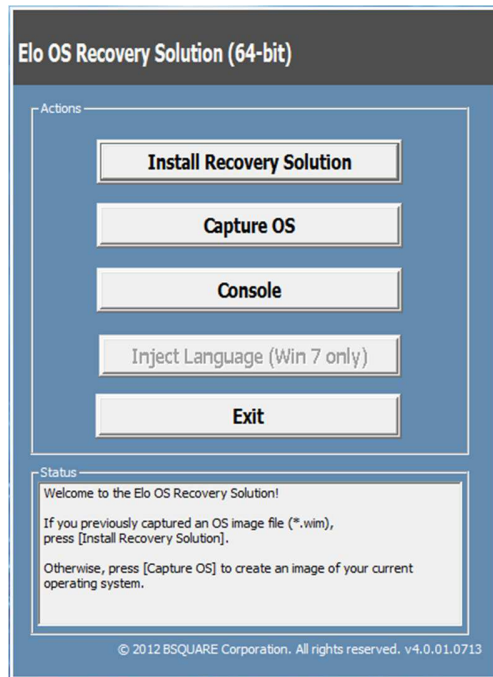


5. Click “Create Restore Media” to proceed. This step will take about 10-20 minutes, depending on your system configurations and flash drive performance.

6. Once the message “Creation Restore Media success...” appears, remove the flash drive and click “Exit” to exit the program.



7. In order to use the recovery flash drive in the case of a system crash, reboot the system and press “F11” several times to enter the “Device Boot Menu.” Subsequently, select to boot from flash drive.



8. When the following UI is presented, click “Install Recovery Solution” button.
9. Follow the on-screen instructions to complete the installation process and then exit the program.
10. Note: All data will be deleted during the recovery process. User should back up files when necessary. Elo Touch Solutions does not accept liability for lost data or software.

11. Note: The end user must adhere to Microsoft's Licensing Agreement

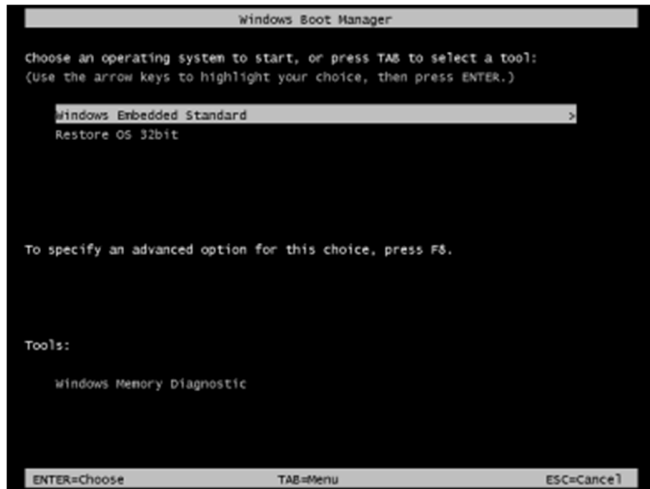
Recovering the Operating System

If for any reason the touchcomputer's operating system needs to be recovered TO FACTORY SETTINGS, you can recover your system by following procedures below. PLEASE NOTE THAT ALL CUSTOMER SETTINGS AND DATA WILL BE LOST DURING THIS PROCESS. Please be sure to backup all data, settings, and customer-installed software before proceeding.

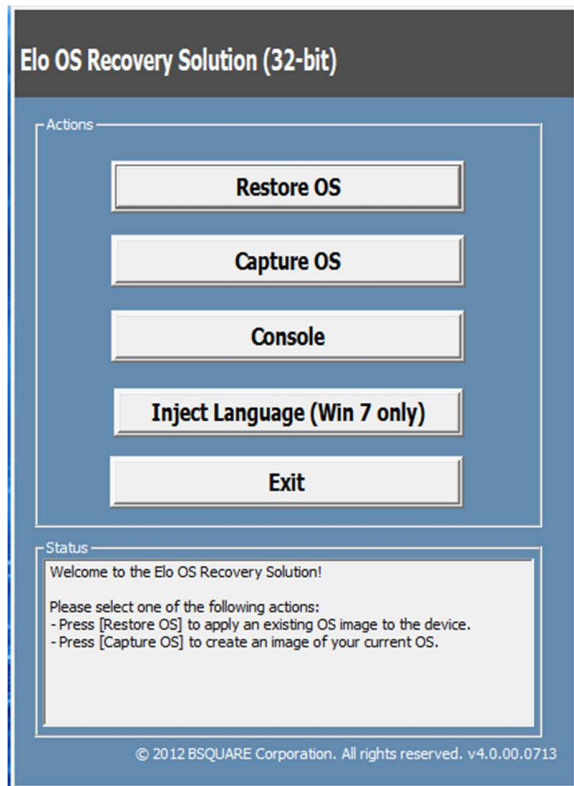
1. Power off your system.
2. Power on your system.
3. After the Elo splash screen (shown below) appears, press “↑” or “↓” repeatedly to pause on Windows Boot Manager.



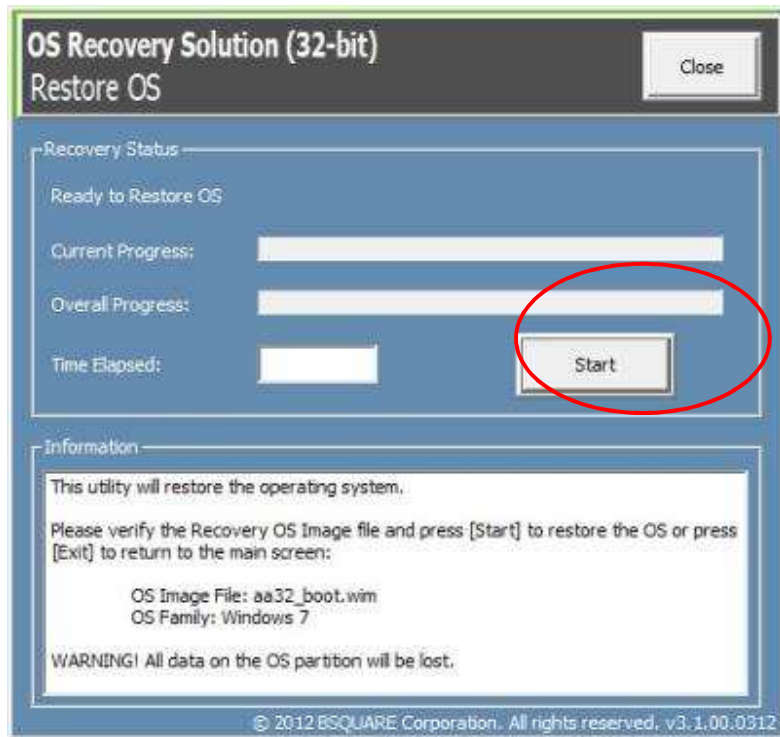
4. Select either to “Restore OS 32bit” or “Restore OS 64bit” depending on your OS environment.



5. The following User Interface (UI) will appear:



6. Select "Restore OS". The system will automatically test your hardware. Once the process completes, click the "Start" button to perform the system recovery function.



7. The following process will reformat the primary hard drive. **Please back up your data before performing the recovery process.**



8. Once completed, click the “Close” button. The system will return to the main menu of the Elo Recovery Solution. Click the “Exit” button to restart your system.

All data is deleted during the recovery process. The user should back up files when necessary. Elo Touch Solutions does not accept liability for lost data or software.

The end user must adhere to Microsoft's Licensing Agreement.

Section 4: Technical Support

If you are experiencing trouble with your Computer Module, refer to the following suggestions.

If the problem persists, please contact your local dealer or contact Elo Touch Solutions Customer Service.

Solutions to Common Problems

Problem	Suggested Troubleshooting
The Computer Module does not turn on when the power button is pressed.	Disconnect the AC power cable and verify that the Computer Module is properly installed Reconnect the AC power cable and turn on the system
Monitor display is dim	Use the OSD to increase the brightness Use the OSD to increase the contrast
Monitor display is blank	If the Power Status LED is blinking, the monitor or Computer Module may be in SLEEP mode Press any key / move the mouse / touch the touchscreen to see if the image reappears Check that the signal source device is turned on Check that that there are no loose cable connections
Monitor displays an “Out of Range” message	Adjust your computer’s resolution/timing mode to be within the allowable timing ranges specified for your touchmonitor (see website for specifications)
Touch functionality doesn’t work	Verify that your Computer Module has the latest drivers installed Perform the calibration routine provided with the latest Elo drivers

Technical Assistance

Technical Specifications

visit www.elotouch.com/products
for technical specifications for this device

Support

visit www.elotouch.com/support
for technical support

See this user manual's last page for worldwide technical support phone numbers.

Technical assistance for Computer Modules running Windows OS are also available on the computer in the Support Information section of the Systems Properties menu. The Systems Properties menu can be accessed by:

- Right-clicking the My Computer icon and selecting Properties from the drop-down menu, or
- Clicking the Start button; go to the Settings -> Control Panel menu and selecting the System icon

Section 5: Safety & Maintenance

Safety

- To avoid risk of electric shock, follow all safety notices and do not disassemble the touchmonitor. They are not user-serviceable.
- The slots located on the sides and top of the touchmonitor case are for ventilation. Do not block or insert anything inside the ventilation slots.
- Ensure that your installation allows touchmonitor to meet specified environmental conditions below:

Environmental conditions for transportation and storage

Temperature:

Operating	0°C to 40°C
Storage/Transportation	-20°C to 60°C

Humidity (non-condensing):

Operating	20% to 80%
Storage/Transportation	10% to 90%

Altitude:

Operating	0 to 3,000m
Storage/Transportation	0 to 12,192m

Caution

There is risk of explosion if battery is replaced by an incorrect type. Dispose of used batteries at the end of its useful life according to local laws and regulations.

Waste Electrical & Electronic Equipment Directive (WEEE)

This product should not be disposed of with household waste. It should be deposited at a facility that enables recovery and recycling.



is put in place recycling arrangements in certain parts of the world. For information on how you can access these arrangements, please visit lotouch.com/e-waste-recycling-program/.

Section 7: Regulatory Information

Electrical Safety Information

Compliance is required with respect to the voltage, frequency, and current requirements indicated on the manufacturer's label. Connection to a different power source than those specified herein will likely result in improper operation, damage to the equipment or pose a fire hazard if the limitations are not followed.

There are no operator serviceable parts inside this equipment. There are hazardous voltages generated by this equipment which constitute a safety hazard. Service should be provided only by a qualified service technician.

Contact a qualified electrician or the manufacturer if there are questions about the installation prior to connecting the equipment to mains power.

Emissions and Immunity Information

Notice to Users in the United States: This equipment has been tested and found to comply with the limits for a Class A digital device, pursuant to Part 15 of FCC Rules. These limits are designed to provide reasonable protection against harmful interference in a residential installation. This equipment generates, uses, and can radiate radio frequency energy, and if not installed and used in accordance with the instructions, may cause harmful interference to radio communications.

Notice to Users in Canada: This equipment complies with the Class A limits for radio noise emissions from digital apparatus as established by the Radio Interference Regulations of Industrial Canada.

Notice to Users in the European Union: Use only the provided power cords and interconnecting cabling provided with the equipment. Substitution of provided cords and cabling may compromise electrical safety or CE Mark Certification for emissions or immunity as required by the following standards:

This Information Technology Equipment (ITE) is required to have a CE Mark on the Manufacturer's label which means that the equipment has been tested to the following Directives and Standards: This equipment has been tested to the requirements for the CE Mark as required by EMC Directive 2014/30/ EU as indicated in European Standard EN 55032 Class A and the Low Voltage Directive 2014/35/EU as indicated in European Standard EN 60950-1.

General Information to all Users: This equipment generates, uses and can radiate radio frequency energy. If not installed and used according to this manual the equipment may cause interference with radio and television communications. There is, however, no guarantee that interference will not occur in any particular installation due to site-specific factors.

This device complies with part 15 of the FCC Rules.
Operation is subject to the following two conditions: (1)
This device may not cause harmful interference, and (2)
this device must accept any interference received,
including interference that may cause undesired operation.

1. In order to meet emission and immunity requirements, the user must observe the following:
 - a. Use only the provided I/O cables to connect this digital device with any computer.
 - b. To ensure compliance, use only the provided manufacturer's approved line cord.
 - c. The user is cautioned that changes or modifications to the equipment not expressly approved by the party responsible for compliance could void the user's authority to operate the equipment.
2. If this equipment appears to cause interference with radio or television reception, or any other device:
 - a. Verify as an emission source by turning the equipment off and on. If you determine that this equipment is causing the interference, try to correct the interference by using one or more of the following measures:
 - i. Move the digital device away from the affected receiver.
 - ii. Reposition (turn) the digital device with respect to the affected receiver.
 - iii. Reorient the affected receiver's antenna.
 - iv. Plug the digital device into a different AC outlet so the digital device and the receiver are on different branch circuits.
 - v. Disconnect and remove any I/O cables that the digital device does not use. (Unterminated I/O cables are a potential source of high RF emission levels.)
 - vi. Plug the digital device into only a grounded outlet receptacle. Do not use AC adapter plugs. (Removing or cutting the line cord ground may increase RF emission levels and may also present a lethal shock hazard to the user.)

If you need additional help, consult your dealer, manufacturer, or an experienced radio or television technician.

Agency Certifications

The following certifications and marks have been issued or declared for this monitor:

- Europe CE
- Australia RCM
- Canada CUL, IC
- Europe CE
- Japan VCCI
- United States FCC, UL
- International CB

China RoHS

In accordance to Chinese law (Management Methods for the Restriction of the Use of Hazardous Substances in Electrical and Electronic Products), the section below lists out the name and amount of the toxic and/or hazardous materials that this product may contain.

根据中国法律《电器电子产品有害物质限制使用管理办法》，以下部分列出了产品中可能包含的有害物质的名称和含量。

互动式数字标牌电脑模组	有害物质					
	铅 (Pb)	汞 (Hg)	镉 (Cd)	六价铬 (Cr6+)	多溴联苯 (PBB)	多溴联苯醚 (PBDE)
塑料部件	○	○	○	○	○	○
金属零件	X	○	○	○	○	○
电线和电缆组件	X	○	○	○	○	○
PCBA	X	○	○	○	○	○

本表格依据SJ/T 11364的规定编制。
 ○: 表示该有害物质在该部件所有均质材料中的含量均在GB/T 26572规定的限量要求以下。
 X: 表示该有害物质至少在该部件的某一均质材料中的含量超出GB/T 26572规定的限量要求。

上表中打“X”的部件中，应功能需要，部分有害物质含量超出GB/T 26572规定的限量要求，但是符合**欧盟** RoHS法规要求(属于豁免部分)。

Explanation of Markings

In accordance with the SJ/T11364 requirement, electrical and electronic products are marked with the following pollution control logo.

The Environment-Friendly Use Period for this product is 10 years. The product will not leak or mutate under normal operating conditions listed below, so that the use of this electronic information product will not result in any severe environmental pollution, any bodily injury, or damage to any assets.



Operating Temperature: 0-40 / Humidity:20%-80% (non-condensing).

Storage Temperature: -20~60 / Humidity:10%~90% (non-condensing).

It is encouraged and recommended that product packaging be recycled and reused according to local laws.



Section 8: Warranty Information

For warranty information, go to <http://support.elotouch.com/warranty/>

www.elotouch.com

Visit our website for the latest

- Product Information
- Specifications
- Upcoming Events
- Press Releases
- Software Drivers
- Touchmonitor Newsletter

To find out more about our extensive range of Elo touch solutions, go to www.elotouch.com, or call the office nearest you.

North America

Tel +1 408 597 8000
Fax +1 408 597 8001
customerservice@elotouch.com

Europe

Tel +32 (0)16 70 45 00
Fax +32 (0)16 70 45 49
elosales@elotouch.com

Asia-Pacific

Tel +86 (21) 3329 1385
Fax +86 (21) 3329 1400
eloasia@elotouch.com

Latin America

Tel +52 (55) 2281 69581
elosales.latam@elotouch.com

