



SUNSO WPT-800 Driver Manual

Rev. 1.0

WTP-800

CONTENTS

1.Manual Information.....	1
2.Operating System(OS) Environment.....	1
3.Windows Driver Preparation.....	1
4.Windows Driver Installation.....	2
5.Detailed Windows Driver Setting.....	7
5.1 Printing Preferences.....	7
5.2 Other Settings.....	14
6.Uninstall Windows Driver.....	16
7.Specification.....	18

1. Manual Information

This Windows Driver Installation Manual provides information on installation, detailed specifications, and usage of the printer's Windows Driver according to PC operating system (OS).

We maintain ongoing efforts to enhance and upgrade the functions and quality of all our products. As follow, product specifications and/or user manual content may be changed without prior notice.

2. Operating System(OS) Environment

The following operating systems are supported for usage.

- Microsoft Windows 10 (32 bit/64 bit)
- Microsoft Windows 8 (32 bit/64 bit)
- Microsoft Windows 7 SPI (32 bit/64 bit)
- Microsoft Windows Vista SP2 (32 bit/64 bit)
- Microsoft Windows XP Professional SP3 (32 bit)
- Microsoft Windows Server 2012(64 bit)
- Microsoft Windows Server 2008 R2
- Microsoft Windows Server 2008 SP2(32 bit/64 bit)
- Microsoft Windows Server 2003 R2 SP2(32 bit/64 bit)

3. Windows Driver Preparation

The Windows Driver is included in the enclosed CD.

The installation file name is SUNSO POS Printer Driver vX.X.X.X.exe

eg : SUNSO POS Printer Driver v2.5.0.1.exe

4.Windows Driver Installation



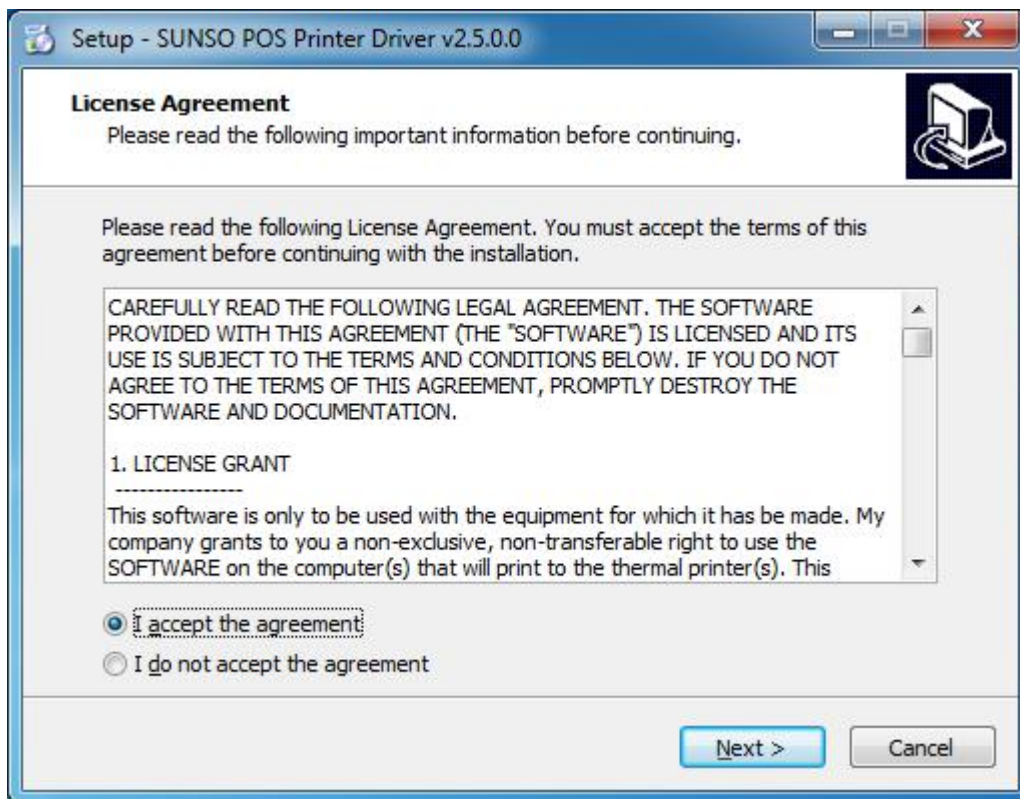
Warning:

Under different operating system, the screen has slight difference. Please operate it according to the tips. Take SUNSO WPT-800 (Windows 7) as example.

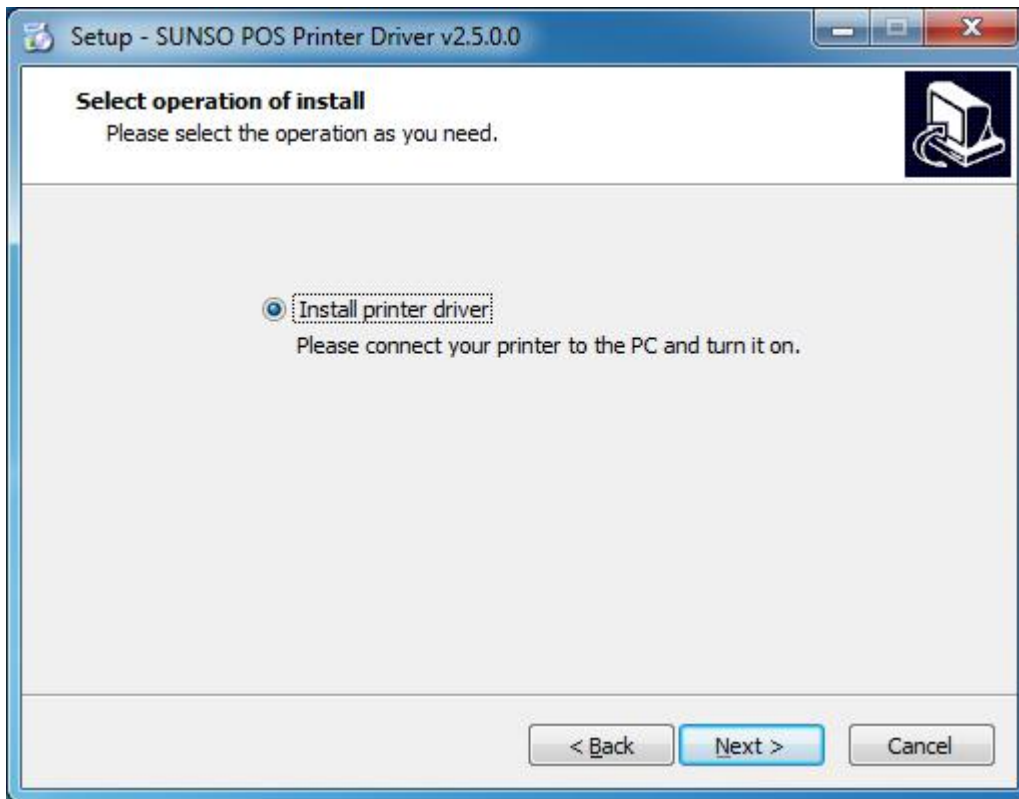
- 1.Double click Windows Driver.
- 2.Choose “English” and click “OK”.



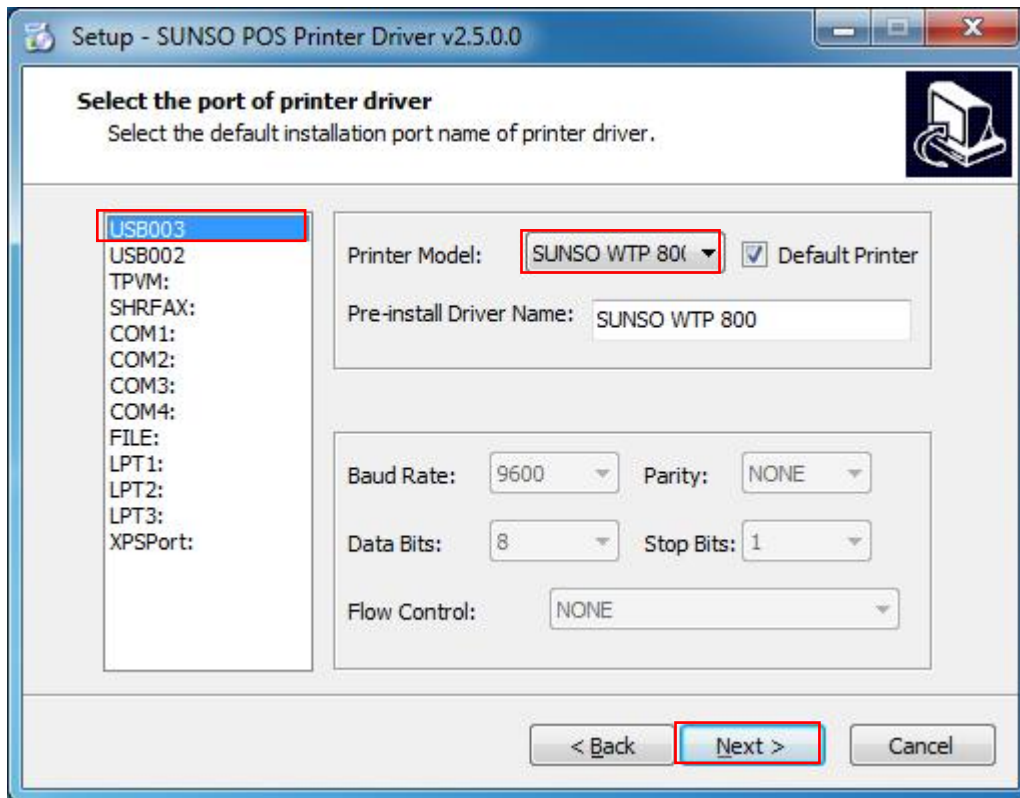
3. Choose “I accept the agreement”, then click “Next”.



4. Click “Next”.



5. Choose the matched type and port (USBxxx is for USB port, COMx is for serial port, LPTx is for parallel port). Choose the type of driver, port, such as “SUNSO WPT-800”, “USB003” as port. Click “Next”.



NOTE: If printer is already connected with computer by USB port, it only needs to click “Install”, then it will be installed automatically. Otherwise, proceed to the next step.

6. Click "Finish". SUNSO WPT-800 printer driver installed successfully.



7. After installation, the icon will be found in "Start" → "Devices and Printers".

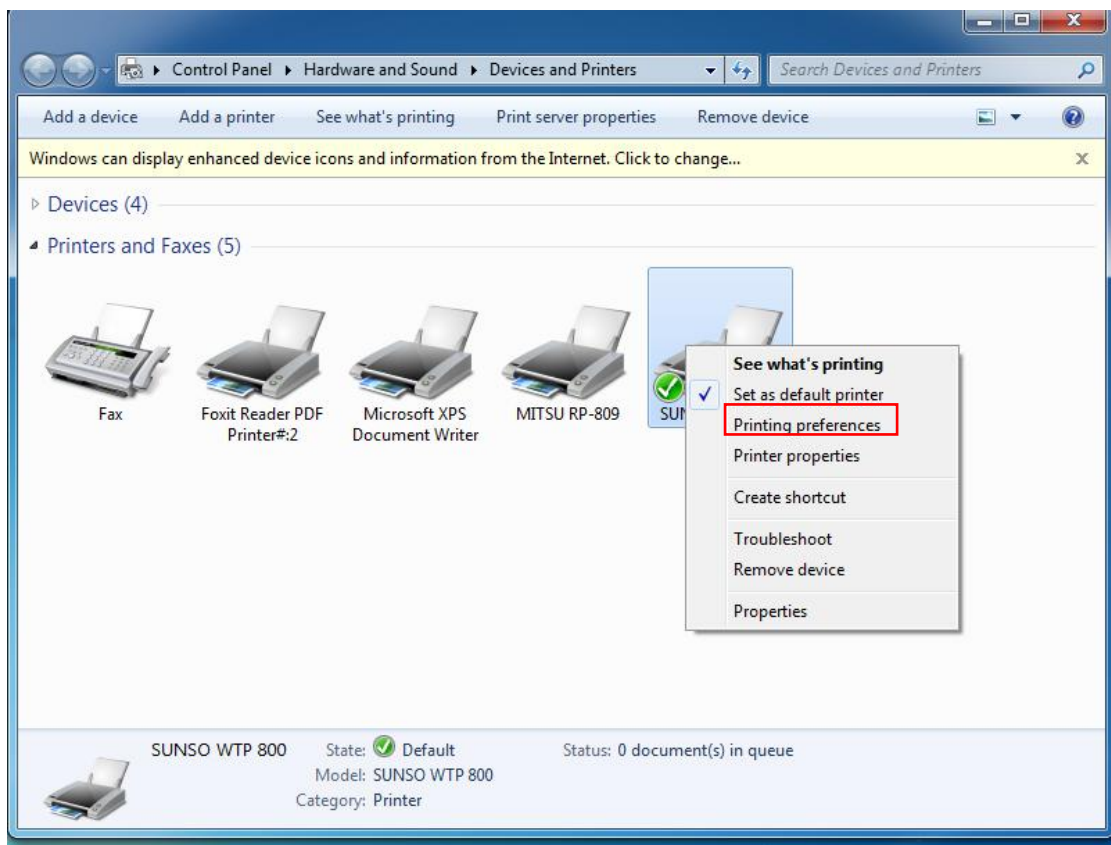


NOTE: If you already installed the driver (No matter what kind of port), when you connect the printer with computer, it will create a USB port automatically.

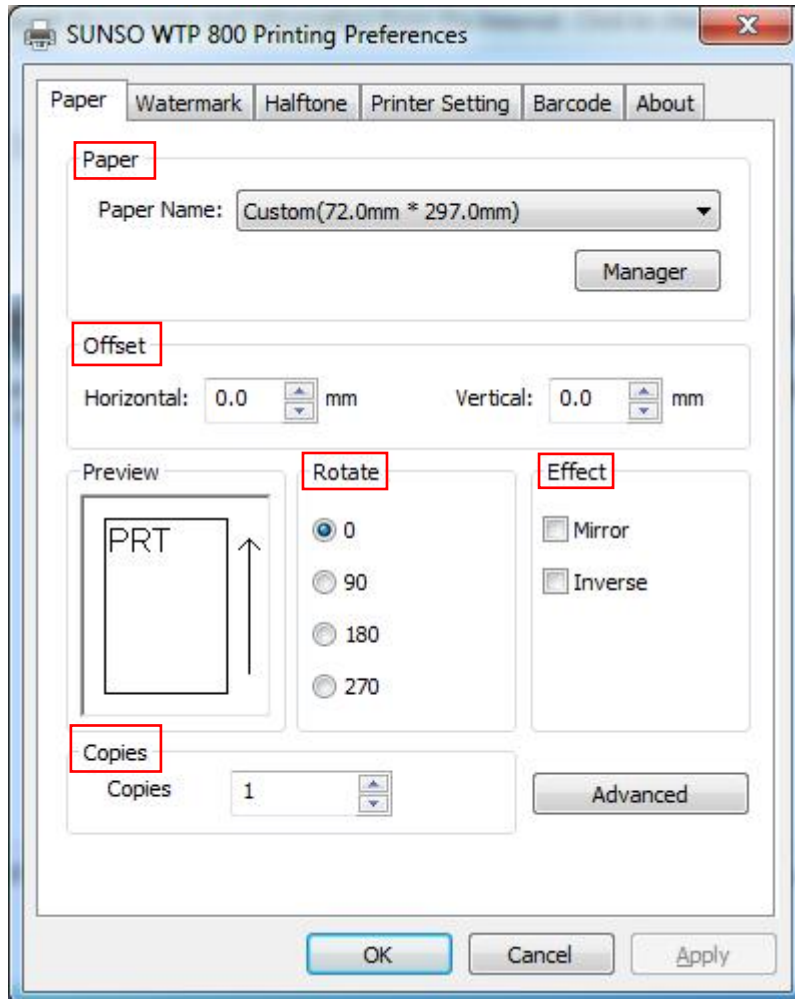
5.Detailed Windows Driver Setting

5.1 Printing Preferences

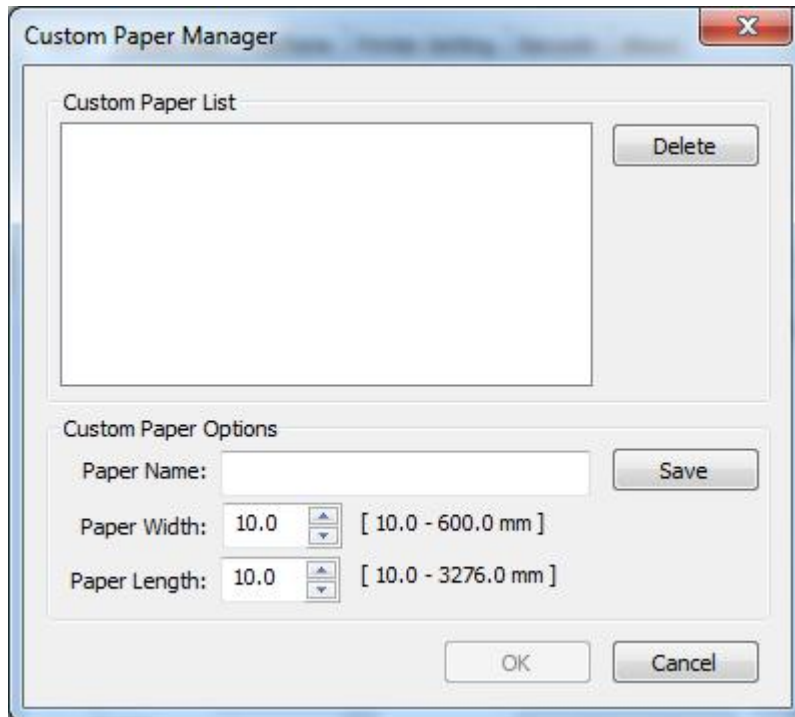
1.Click "Start"→"Devices and Printers". Right click "SUNSO WPT-800" and choose "Printing preferences".



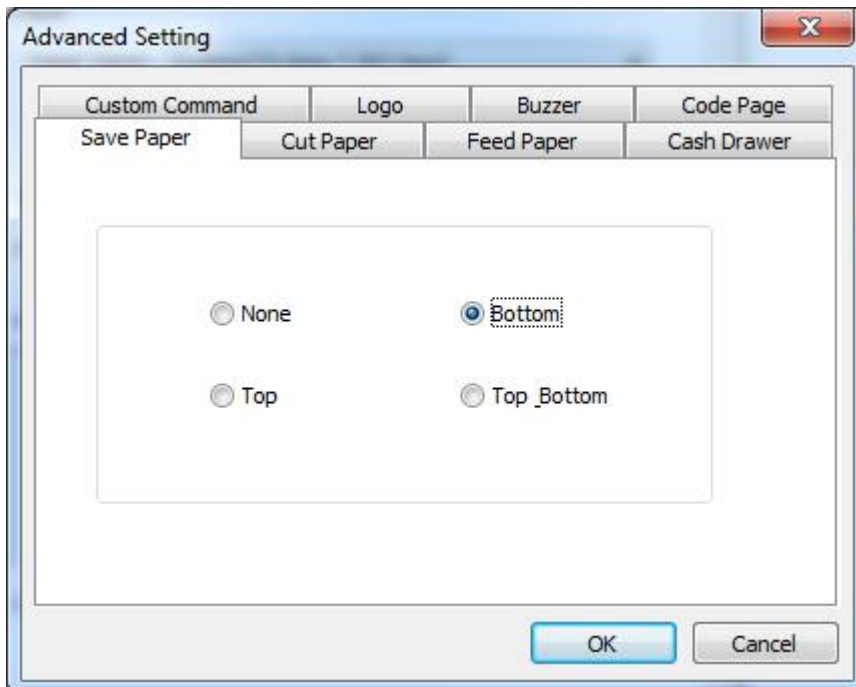
2. According to the different needs, choose “Paper”\“Offset”\“Rotate”\“Effect”\“Copies” in “Paper”.



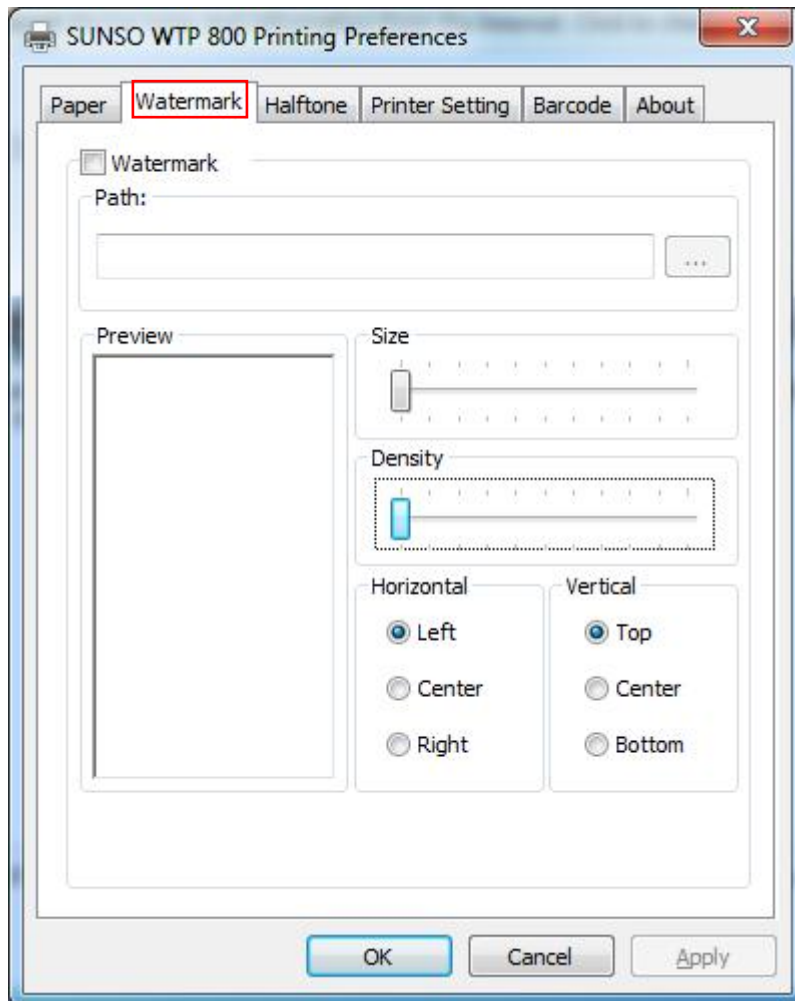
- Click on “Manager”, add or delete paper.



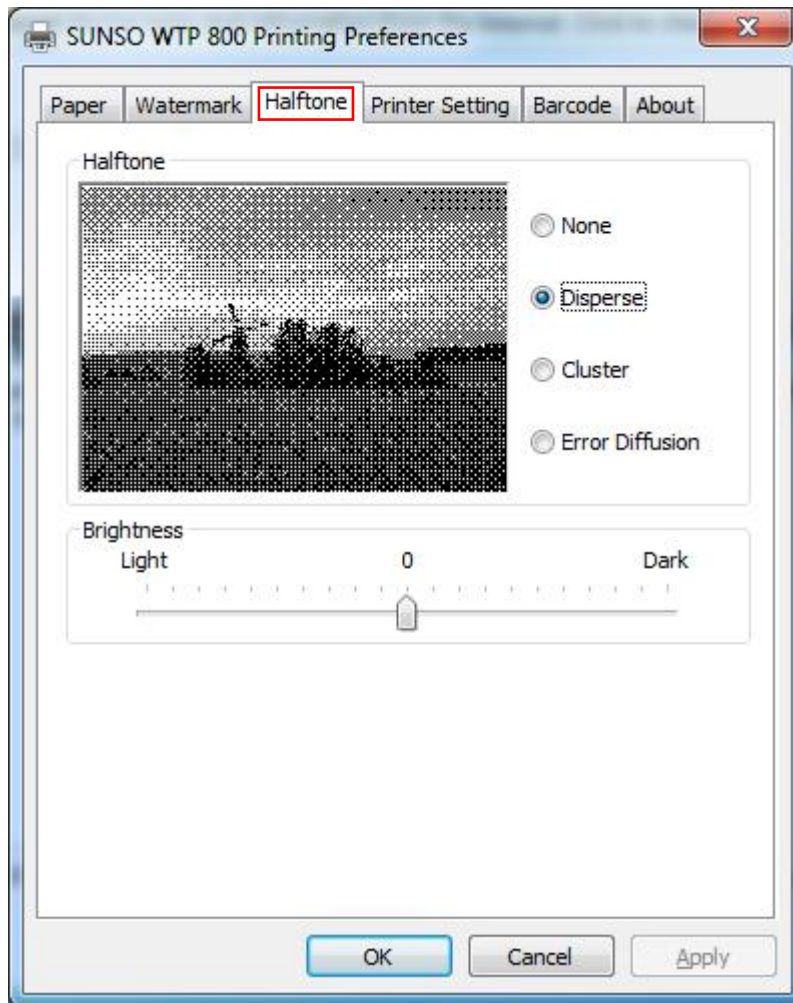
- Click on “Advanced” to set “Save Paper”, “Cut Paper”, “Feed Paper”, “Cash Drawer”, “Custom Command”, “Logo”, “Buzzer”, “Code Page”.



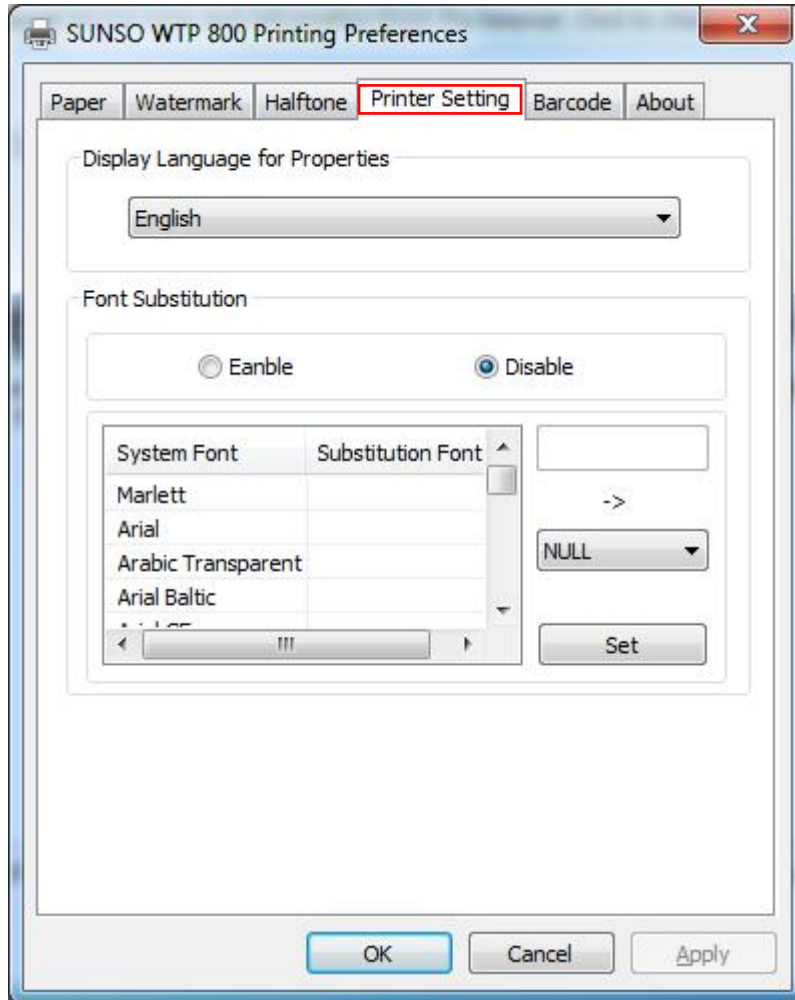
3. Click "Watermark". Set watermark to print.



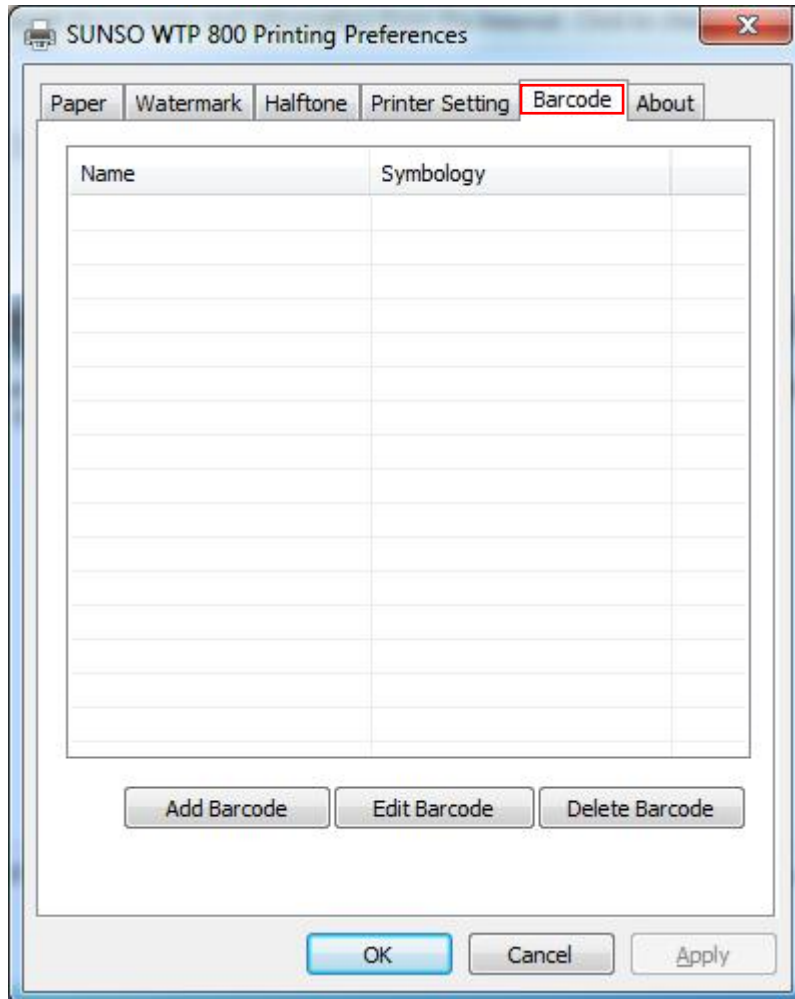
4. Click “Halftone” to set the halftone.



5. Click “Printer Setting” to set “Language For Properties Display” and “Font Substitution”.



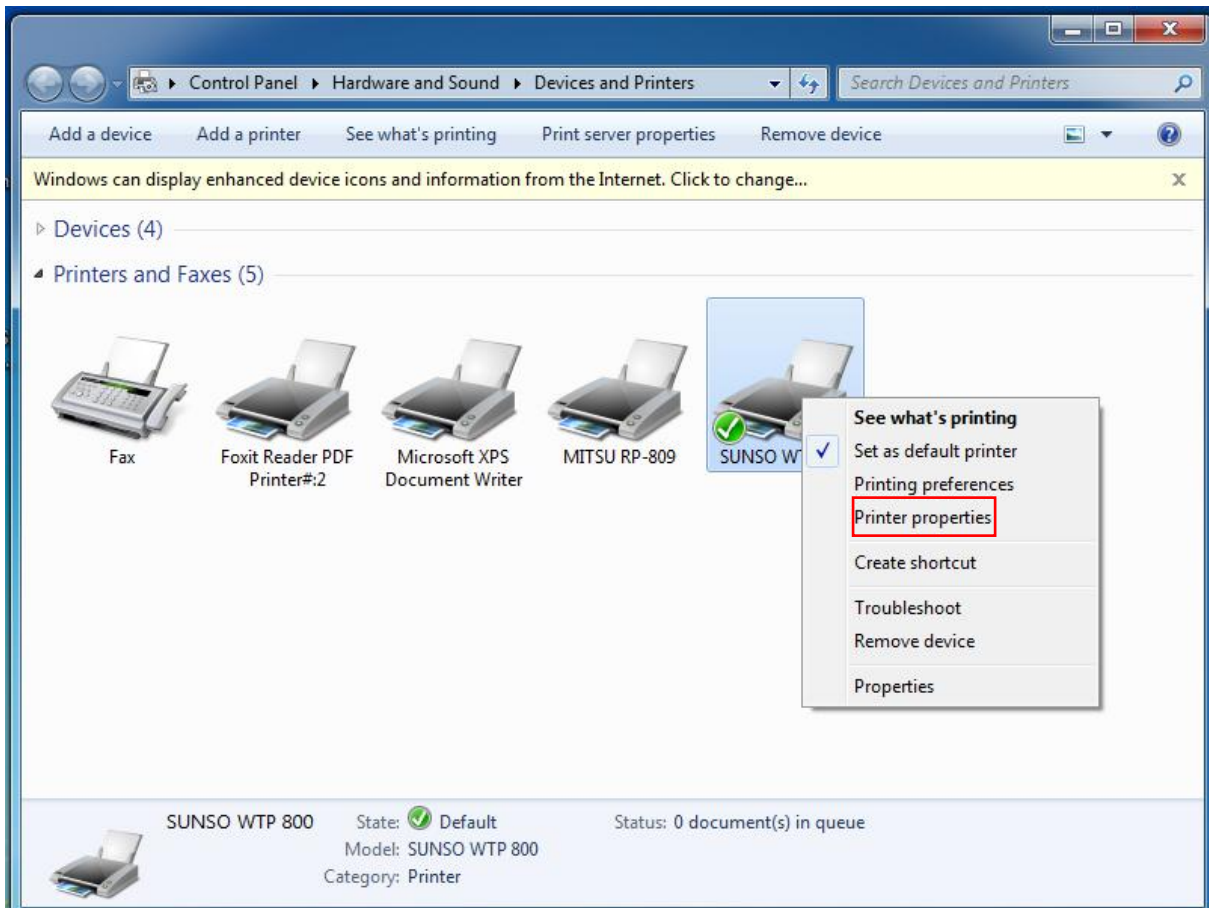
6. Click “Barcode”, and you can choose the “Add Barcode”/“Edit Barcode”/“Delete Barcode” button to add/edit/delete barcode.



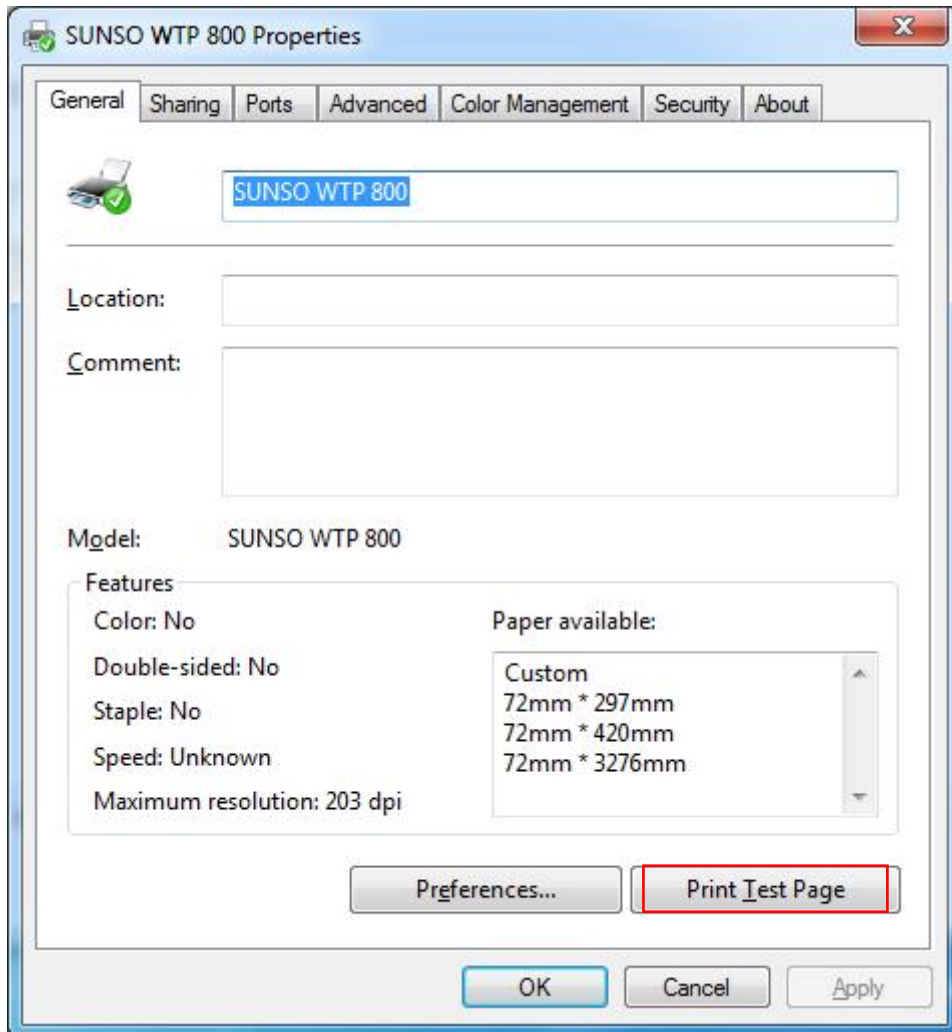
7. After all the setting, click “OK” to save it.

5.2 Other Settings

1. Click "Start" → "Devices and Printers". Right click "SUNSO WPT-800" and choose "Printer properties".



2. Choose "General", click on "Print Test Page", then it will print the current settings.



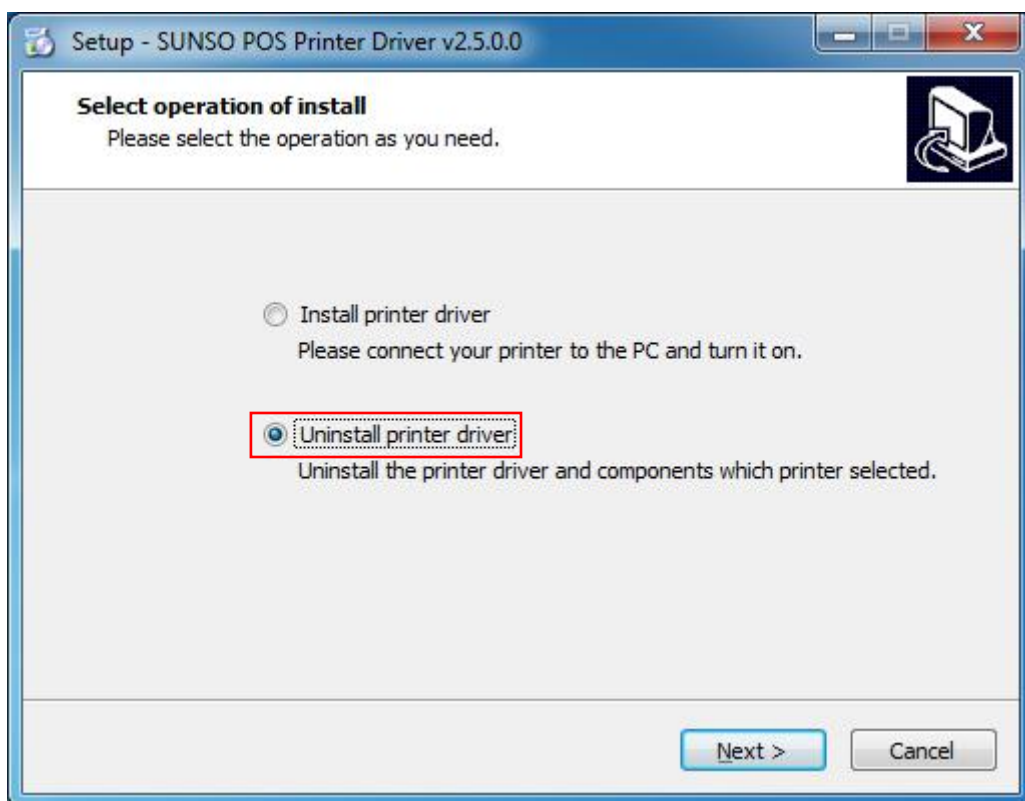
6.Uninstall Windows Driver

1.Double click Windows Driver.

2.Choose “English” and click “OK”.

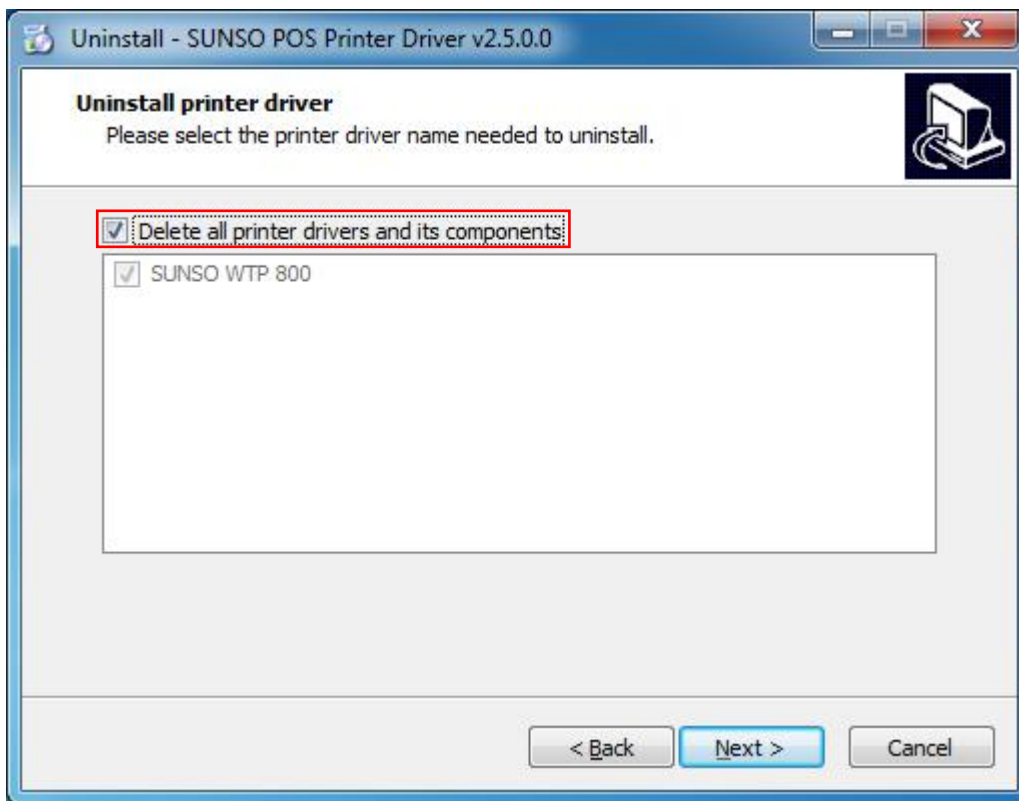


3.Choose “Uninstall printer driver” and click “Next”.

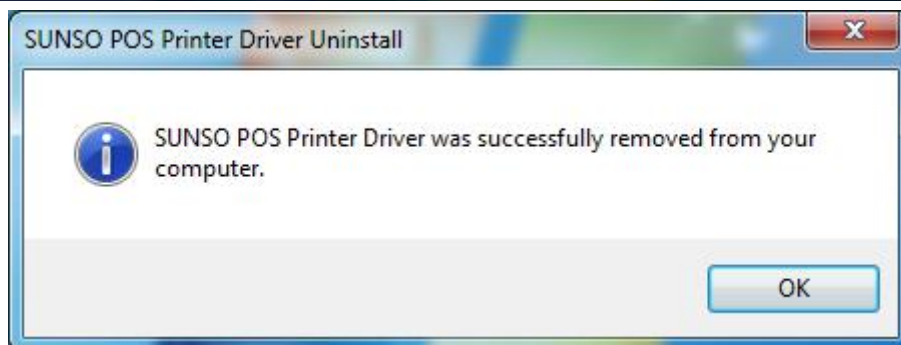
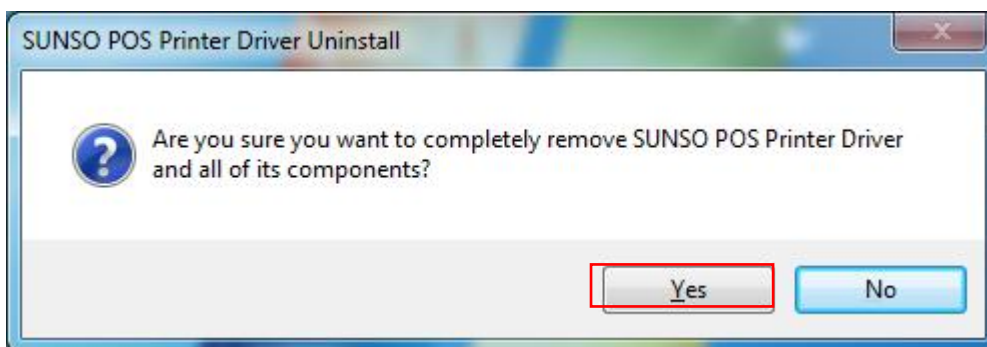


4.

4. Choose “Delete all printer drivers and its components”, then click “Next”.



5. Choose “Yes”. Then it is complete to uninstall.



7.Specification

Resolution:

WPT-800 : 203×203dpi

Paper Size:

Custom(72.0mm * 297.0mm)