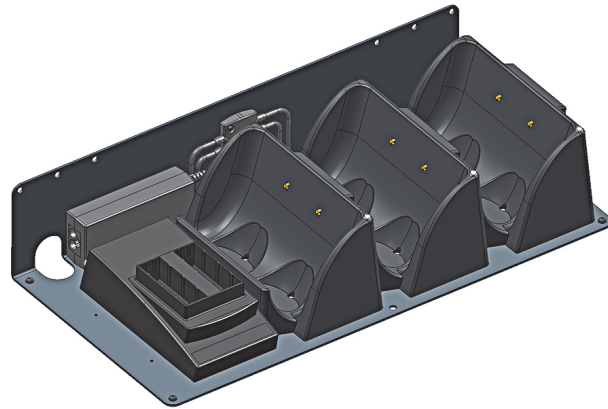
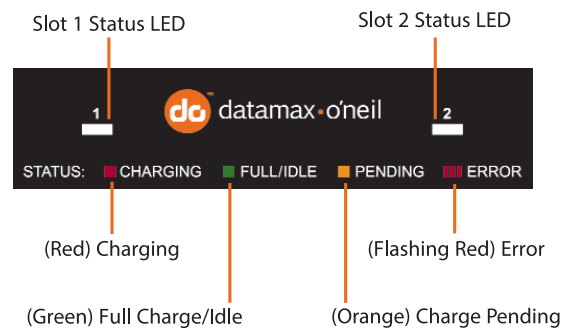


RL 3-UP & 2-Bat. Depot Charger (229029-000)



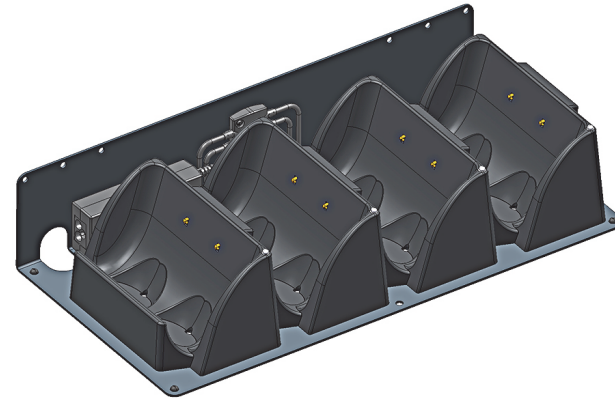
Battery Charger LED Indicators



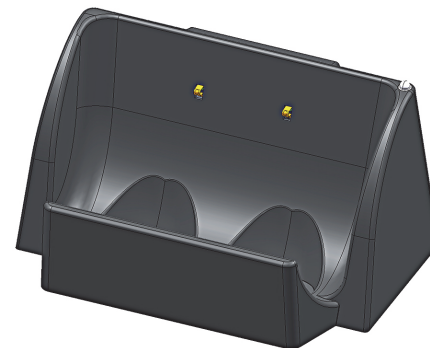
Battery Charger Troubleshooting

Symptom	Possible Cause	Solution
Battery charger will not charge the battery.	Defective battery.	Replace battery.
	Battery too hot or cold.	Allow to adjust to room temp.
	Faulty LED.	Send in for repair.
Battery becomes hot.	Defective battery.	Discontinue charging and remove battery.
Battery Error LED is displayed.	Faulty condition identified.	Remove battery from charger and re-insert.
	Defective battery.	Replace battery.
No LEDs are displayed.	Power supply cord not connected.	Check power supply connections.
	Bad power supply.	Replace power supply.

RL 4-UP Depot Charger (229028-000)



RL Desktop Cradle Charger (229030-000)



Cradle Charger LED Indicators

RED = Charging/Topping-off

GREEN = Idle

Note: User must check the printer's LCD screen for current battery charge level:



Guidelines

General Guidelines

- The Charging Brackets are designed to be used on a desktop or as a wall-mounted unit. It is not intended for vehicle mounting.
- Position the chargers so there is enough room to properly remove the printer(s) and batteries.
- The desktop cradle charger and charging brackets take approximately 5-6 hours to charge each printer. If multiple printers are attached, the charge time remains at approximately 5-6 hours per printer; however, charge times may vary.
- The battery charger takes approximately three hours to charge two batteries sequentially. Charge times may vary.
- When mounting the charging bracket(s), only mount them to wall studs.

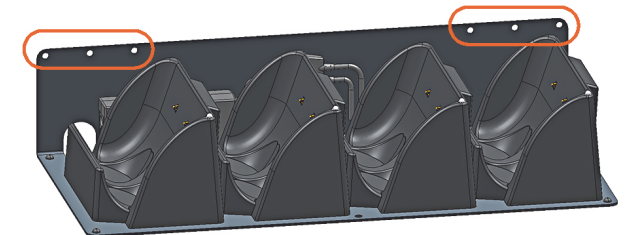
Safety Guidelines

- Position the chargers so they are protected from environmental elements such as direct sunlight, moisture, high temperature, tools, and boxes. Position the chargers in a secure area in normal traffic patterns.
- Do not use the chargers if they appear damaged.
- To reduce risk of electric shock, unplug the chargers before cleaning.
- Batteries become warm to the touch during charging. If the battery becomes too hot to touch, discontinue charging and contact Datamax-O'Neil.
- Use of any charger or battery not approved by Datamax-O'Neil for use with their printers could cause damage to the batteries or printer and will void the warranty.
- Do not insert foreign objects into the chargers.
- Do not disassemble, incinerate, or short circuit batteries, the chargers, or related components.
- Use appropriate hardware when mounting the charging bracket(s). Datamax-O'Neil does not accept liability for improperly mounted charging brackets. Datamax-O'Neil does not accept liability for poorly placed printers and/or chargers.

Mounting the 3-Up and 4-Up Charging Brackets

If the charging brackets will be mounted on a vertical surface or on a wall, use the following procedure to mount them:

- Locate the wall studs.
- Use the charging bracket as a template to mark the mounting holes on the mounting surface. For guidelines on mounting, see the *Guidelines* in the previous section.



- Drill the mounting holes at the marked locations. When drilling the mounting holes, verify that you drill the holes into a stud.

Warning: Use caution when drilling the mounting holes and when mounting the charging brackets onto a wall.

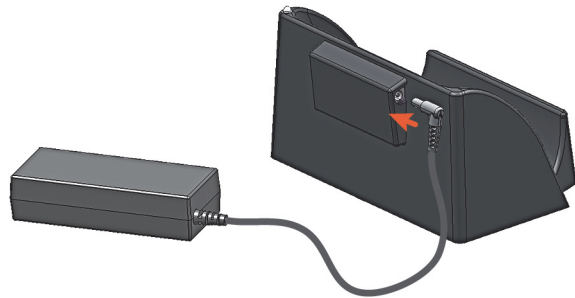
- Attach the charging bracket to the mounting surface as follows:
 - Wood Surface:* Use three #10 pan head wood screws with washers (not included). #10 wood screws should not be used on any other type of surface.
 - Drywall Surface:* Use three #10 pan head toggle bolts (not included).
- Verify the charging bracket is level and secure.
- Thread the screws through the washers, charging bracket, and into the mounting holes, and tighten securely. Make sure the charging bracket is flush to the wall and there are no pinched cables.

Attaching the Power Supply

RL Desktop Cradle Charger

Use the following procedure to attach the power supply to the desktop cradle charger.

1. Insert the power supply into the desktop cradle charger.

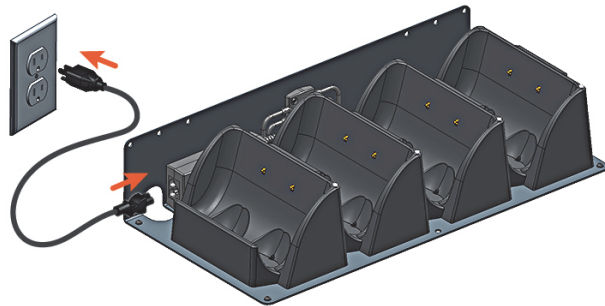


2. Guide the power supply cord through the slots to form a strain relief, as shown above.

RL 3-Up and 4-Up Charging Brackets

Use the following procedure to attach the power supply to the charging brackets.

1. Insert the power supply cord into the power supply socket. Make sure the three prongs are inserted correctly.



2. Plug the power supply into the correct outlet.

Inserting the Printer(s)

To insert a printer to a desktop cradle charger or a charging bracket, place the printer in the charger so the LEDs are facing up.

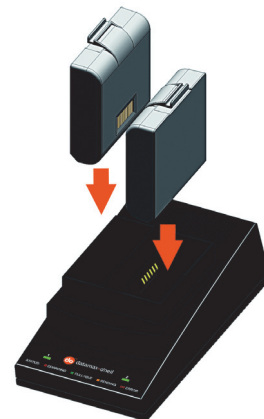


Note: Make sure you regularly clean the charging contact points on your printer's case to ensure your printer's batteries are properly charged, and to avoid damage to the printer or the charger. To clean the charging contact points, use alcohol and a clean rag.

Using the Battery Charger

Note: The battery charger is designed to charge Lithium Ion (Li-ion) batteries only.

1. Position the battery above the charger so that the contacts on the bottom of the battery align with the contacts on the charger.



2. Place the battery in the charger. The charging cycle begins. The battery LED turns green when the charge is complete.

Agency Approvals

FCC Notice

This equipment has been tested and found to comply with the limits for a Class B digital device, pursuant to Part 15 of the FCC Rules. These limits are designed to provide reasonable protection against harmful interference in a residential installation.

This equipment generates, uses and can radiate radio frequency energy and, if not installed and used in accordance with the instructions, it may cause harmful interference to radio communications. However there is no guarantee that interference will not occur in a particular installation. If this equipment does cause harmful interference to radio or television reception, which can be determined by turning the equipment off and on, the user is encouraged to try to correct the interference by one or more of the following measures:

Reorient or relocate the receiving antenna.

Increase the separation between the equipment and receiver.

Connect the equipment to an outlet on a circuit different from that to which the receiver is connected.

Consult the dealer or an experienced radio/TV technician for help.



Applicable Directive
89/336/EEC, 73/23/EEC

Applicable Standards
EN55022 (1998)
EN55024 (1998)
EN60950 (1992)

Warranty

The Company warrants that Datamax-O'Neil products are free from defects in manufacturing materials and workmanship for one (1) year from date of original purchase to Buyer/Distributor (OEMs 90 days from the date of purchase). Batteries, cables, power supplies, and other accessories will be warranted for ninety (90) days.

Datamax-O'Neil makes no other warranties, expressed or implied, including implied warranties of merchantability and fitness of purpose.

If you try to repair, disassemble, or change the product in any way, or use parts not provided by Datamax-O'Neil without prior, written authorization, all warranties are void.

For complete warranty and service information, see the Warranty Card included in your printer's original packaging.

No Liability for Negligent Use

In no event shall Datamax-O'Neil be held liable for any damages whatsoever (including, without limitations, damages for loss of profits, business interruption, loss of information, or other pecuniary loss) arising out of negligence in use and care of the product.